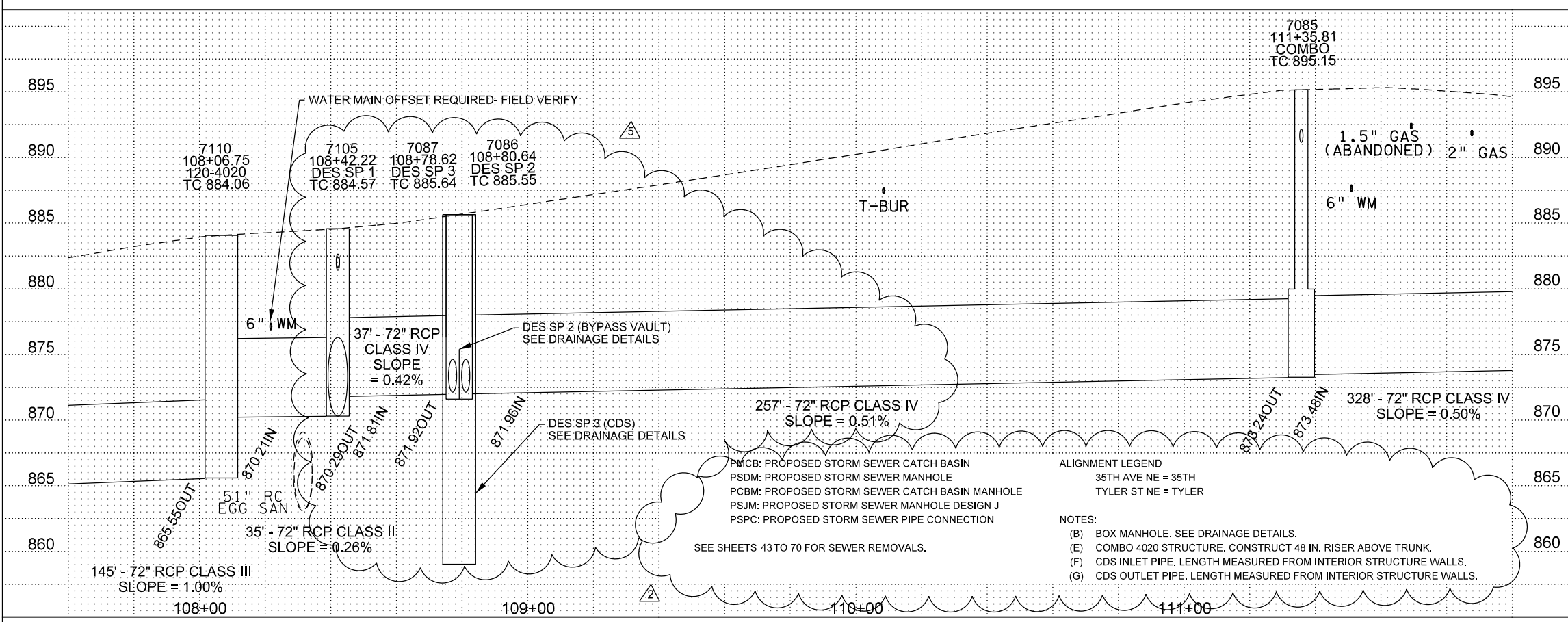
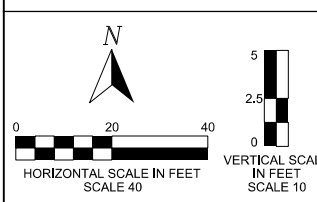


ESTIMATED DRAINAGE QUANTITIES				
LEGEND	ITEM NUMBER	DESCRIPTION	UNIT	QUANTITY
→	2503.503	12" PVC PIPE SEWER	LIN FT	124
→	2503.503	30" PVC PIPE SEWER	LIN FT	6
→	2503.503	72" RC PIPE SEWER DES 3006 CLASS II	LIN FT	35
→	2503.503	72" RC PIPE SEWER DES 3006 CLASS III	LIN FT	145
→	2503.503	72" RC PIPE SEWER DES 3006 CLASS IV	LIN FT	294
▣	2506.502	CONST DRAINAGE STRUCTURE DESIGN N	EACH	4
⊙	2506.503	CONST DRAINAGE STRUCTURE DES 48-4020	LIN FT	14.5
⊙	2506.503	CONST DRAINAGE STRUCTURE DES 96-4020	LIN FT	7.4
⊙	2506.503	CONST DRAINAGE STRUCTURE DES 120-4020	LIN FT	18.5
⊙	2506.502	CONSTRUCT DRAINAGE STRUCTURE DESIGN SPECIAL 1	EACH	1
⊙	2506.502	CONSTRUCT DRAINAGE STRUCTURE DESIGN SPECIAL 3	EACH	1
⊙	2506.502	CONSTRUCT DRAINAGE STRUCTURE DESIGN SPECIAL 4	EACH	1
	2506.502	CASTING ASSEMBLY	EACH	6

STORM SEWER STRUCTURES													
NUMBER	ALIGNMENT	LOCATION	TYPE	SIZE	CONSTRUCTION	DRAINAGE	PIPE	TYPE	LENGTH	ELEVATION	CASTING	CREATING	NOTES
7081	35TH	111+75.75	33.13	R	PMCB	30	2.9	7083	12	PVC	29	895.15	B-13
7083	35TH	111+46.71	33.31	R	PMCB	30	3.3	7085	12	PVC	39	895.29	B-13
7085	35TH	111+35.81	3.85	L	PSDM	96	21.9	7086	72	RCP	257	895.15	A-8D (E)
7086	35TH	108+80.64	14.73	L	VAULT			7105	72	RCP	37	885.55	30" MH (F)
7087	35TH	108+78.62	2.41	R	CDS			7087	30	PVC	3	885.64	24" MH (G)
7085	35TH	111+35.81	3.85	L	PSDM	96	21.9	7105	72	RCP	294	895.15	A-8D (E)
7102	35TH	108+65.76	14.95	R	PMCB	30	2.9	7105	12	PVC	30	884.71	B-13
7103	35TH	108+66.04	14.99	L	PMCB	30	2.9	7105	12	PVC	26	884.91	B-13
7105	35TH	108+42.22	4.14	L	BOX	120	14.3	7110	72	RCP	35	884.57	A-8D (B)
7110	35TH	108+06.75	3.96	L	PSDM	120	18.5	7114	72	RCP	145	884.06	A-8D



- GENERAL NOTES:
- PERMIT REQUIRED FOR ALL PRIVATE STORM, SANITARY, WATER SERVICE, AND RAIN LEADER CONNECTIONS, MODIFICATIONS, OR REMOVALS.
  - SHAPE MANHOLE INVERTS FOR EFFICIENT FLOW PER SEWR-1002.
  - ALL RCP TO BE TYPE R-4 WITH GASKETS PER SEWR-4001 AND SEWR-4002.
  - INSTALL RCP BELL IN UPSTREAM DIRECTION.
  - BULKHEAD AND FILL ALL ABANDONED STORM DRAINS.
  - AS-BUILTS REQUIRED. SEE SPECIFICATIONS.
  - STATIONS, OFFSETS, AND TOP OF CASTING ELEVATIONS ARE GIVEN TO THE CENTER OF THE CASTING ASSEMBLY.
  - 30" DES N STRUCTURES ALL USE B-13 CASTINGS AND ARE INCLUDED IN COST. CASTING ASSEMBLY DOES NOT INCLUDE 30" DES N STRUCTURES.
  - FIELD VERIFY ALL CONNECTIONS TO DRAINAGE STRUCTURES AND PIPE.
  - CASTING SUMP = 0.10 FT FOR CATCH BASIN CASTINGS. SUMP HAS BEEN INCLUDED IN TOP OF CASTING ELEVATION.
  - PIPE LENGTHS ARE MEASURED FROM THE CENTER OF STRUCTURE.
  - PIPE INVERT ELEVATIONS ARE GIVEN TO THE OUTSIDE OF STRUCTURE.



NO.	DATE	DRW	CKD	APP	REVISION
2	6/30/20	JJB	DSP	ELH	ADDITION OF DES SP 2 AND 3
5	9/23/20	EES	LAB	ELH	DES SP 2 AND 3 RELOCATION

I HEREBY CERTIFY THAT THIS PLAN, SPECIFICATION, OR REPORT WAS PREPARED BY ME OR UNDER MY DIRECT SUPERVISION AND THAT I AM A DULY LICENSED PROFESSIONAL ENGINEER UNDER THE LAWS OF THE STATE OF MINNESOTA.

*Devin S. Power* 54279 7/15/20  
DEVIN S. POWER LIC. NO. DATE

**SRH** Minneapolis Public Works

STORM SEWER PLAN/PROFILE

DRW: JJB DATE: 4/27/20  
CHK: DSP DATE: 5/18/20  
APP: ELH DATE: 5/18/20

35TH AVE NE STORM SEWER IMPROVEMENTS

LP 600D 4572

86-R5 OF 101

8:47:07 PM 9/23/2020 H:\Projects\12000\12728\Des\1gn\Plan\12728\_dr02.dgn