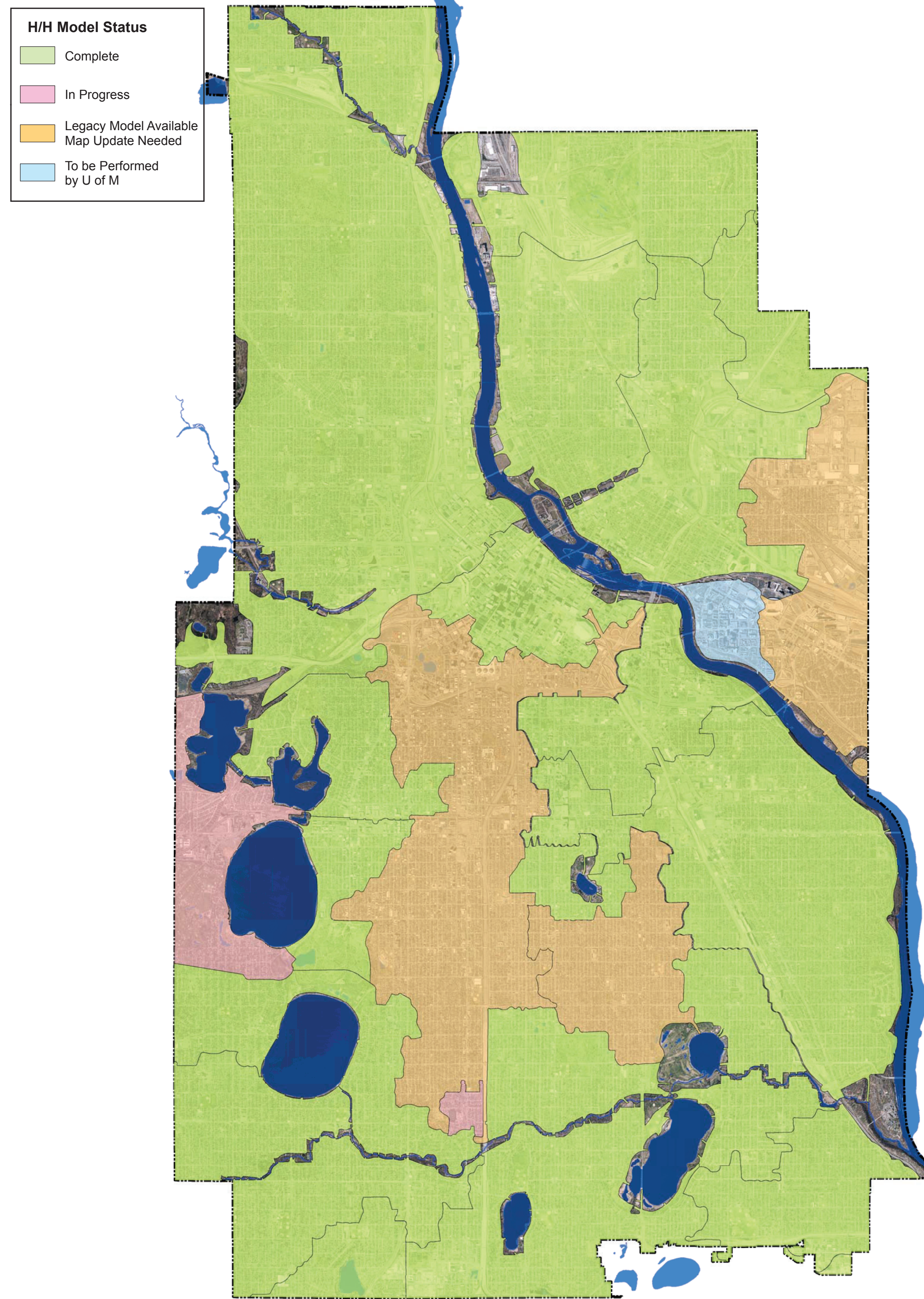
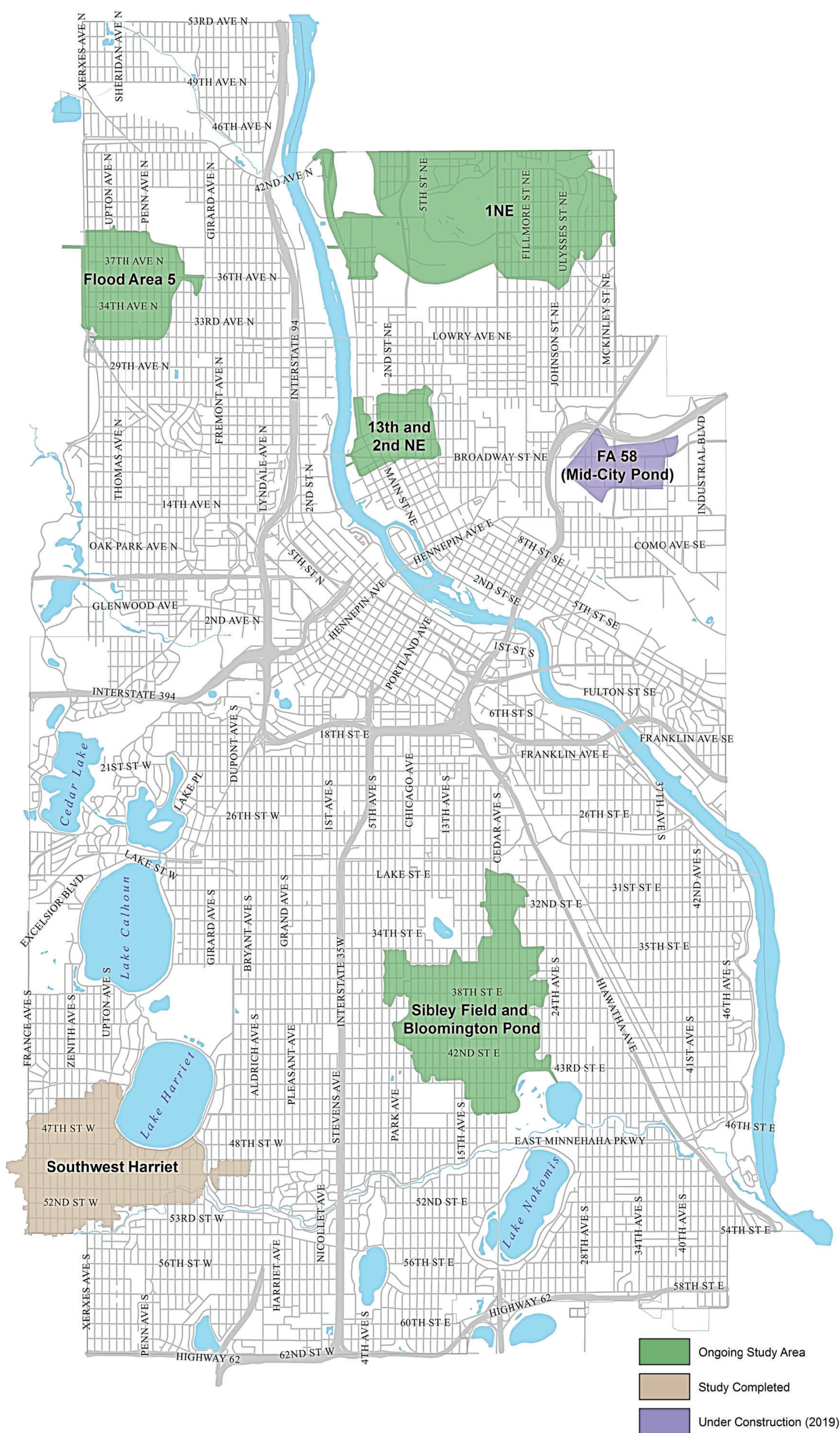


# City of Minneapolis Flood Mitigation Program

H&H Modeling Status



Flood Mitigation Pilot Study Areas



## What's New in the Flood Mitigation Program?

- Hydrologic & Hydraulic (H&H) Models have been completed for over 95% of the city. The models will help to identify all potential flood-prone areas.
- Work has begun on pilot feasibility studies for 6 known flood areas.
- Three of the pilot studies use a new software package to quickly run through many alternatives. These will inform how we approach alternatives analysis and capital projects.

## How do Hydrology & Hydraulic (H&H) Models work?

**H&H Models** predict where flooding is likely to occur and the relative depth. They can also be used to evaluate potential solutions for flood-prone areas. The models are created using *hydrology*, the study of information such as drainage area, percent of hard surfaces, and topography to calculate the amount of runoff generated for a given rainfall amount; and *hydraulic* information about the underground storm pipe system, gutters, and storage basins to represent how the runoff is collected and conveyed to a lake or stream.

## Process

