

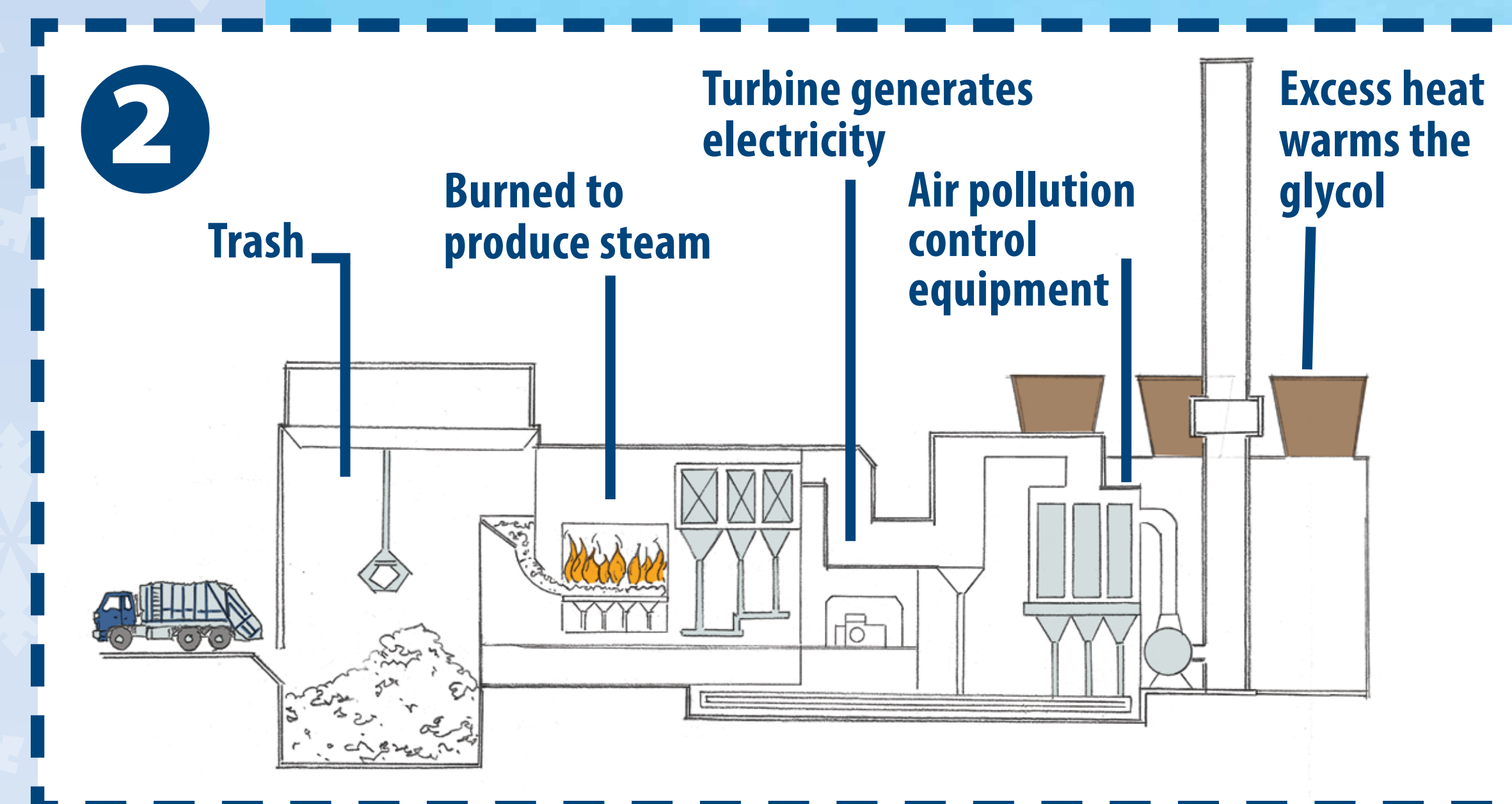
# No shoveling! Snowmelt system

## How it works

- 1** Under your feet, glycol mix (antifreeze) circulates through 50 miles of plastic tubing embedded into the concrete. The glycol warms the concrete to melt snow.
- 2** The glycol circulates through the Hennepin Energy Recovery Center (HERC), where excess heat from the production of energy warms the glycol.

## Benefits

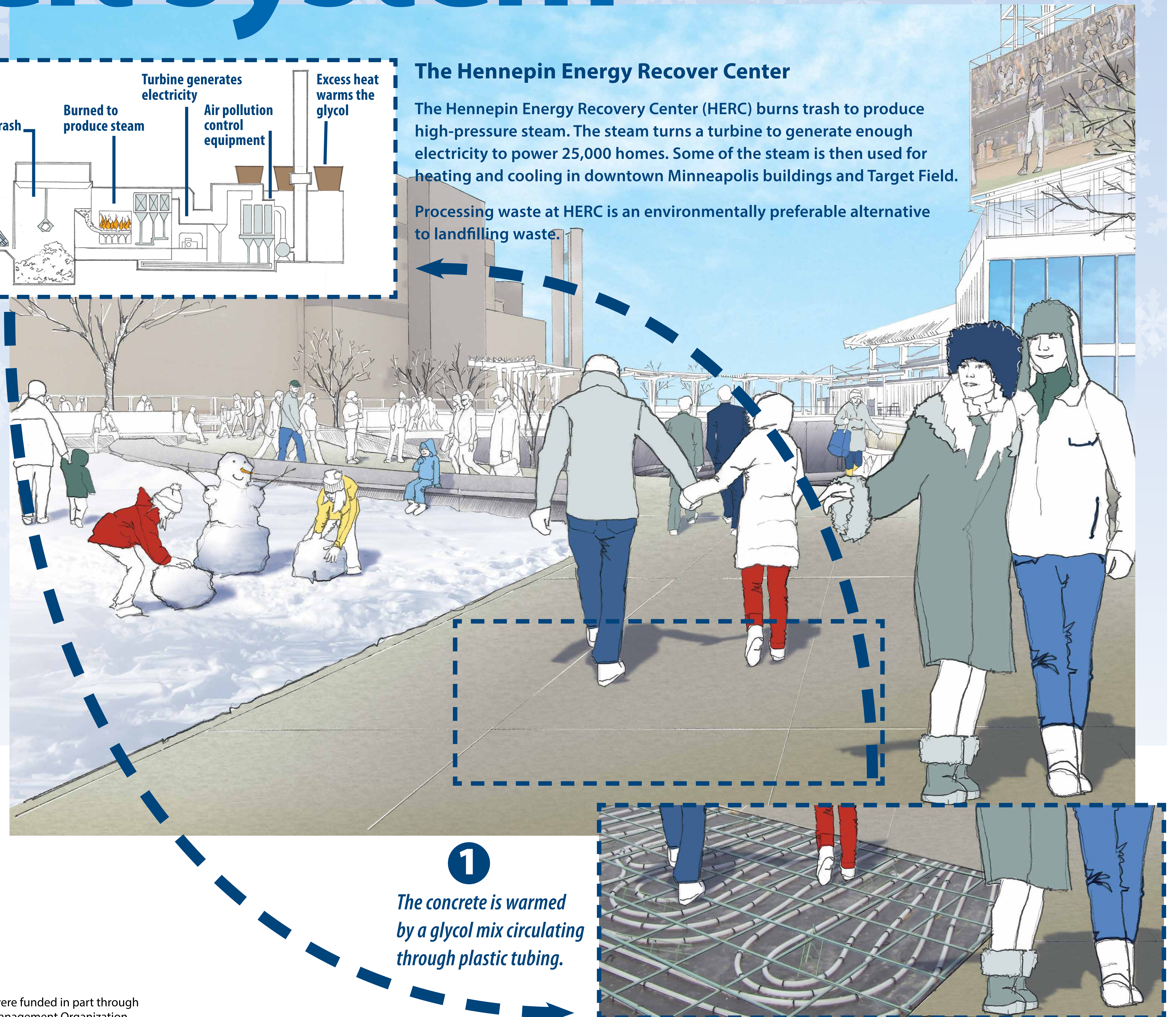
- Eliminates salt and chemical use for snowmelt, protecting water in the Mississippi River.
- Improves the efficiency of HERC by using excess heat.
- Reduces maintenance like shoveling, which reduces costs, saves fuel, and creates cleaner and safer walkways.



## The Hennepin Energy Recover Center

The Hennepin Energy Recovery Center (HERC) burns trash to produce high-pressure steam. The steam turns a turbine to generate enough electricity to power 25,000 homes. Some of the steam is then used for heating and cooling in downtown Minneapolis buildings and Target Field.

Processing waste at HERC is an environmentally preferable alternative to landfilling waste.



The stormwater management practices were funded in part through a grant from the Mississippi Watershed Management Organization.