



Annual Activity & Financial Report 2009



Prepared for the MWMO by staff

Annual Activity and Financial Report 2009

Prepared for the MWMO by

Douglas Snyder, Executive Director

Zhenya Stone, Office Administrator

Suggested citation:

Mississippi Watershed Management Organization. 2009. Annual Activity and Financial Report 2009

Front Cover:

Upper Photo: The rare and elusive blue-winged teal resting during migration in the Mississippi River Critical Area near downtown Minneapolis
Photograph by B. Jastram, Mississippi Watershed Management Organization

Lower Photo: Courtesy of the Museum of Natural History



MISSISSIPPI
WATERSHED
MANAGEMENT
ORGANIZATION

1224 Marshall Street NE, Suite 201
Minneapolis, Minnesota 55413-0136

(612) 465-8780
(612) 465-8785 fax

www.mwmo.org

Annual Activity and Financial Report

All metro-area watershed management organizations are required to annually submit an Activity Report, Financial Report, and Financial Audit within 120 days of the end of the organization's fiscal year.

This report meets the requirements of the Metropolitan Water Management Act (MS 103B.231) and Minnesota Rules 8410.0150. The Certified Financial Audit Report (CFAR) is attached as a separate document. The intent of the activity and financial report is to provide an annual snapshot or record of where the organization is in meeting its mission, goals, and objectives, and what its goals and objectives are for next year. This record is important, not only to meet rule requirements, but also for future organization board and staff members to understand why past decisions were made and directions were taken.

Key components of the required reporting are:

- Financial budgets and expenditure information
- Annual workplan and evaluation of past workplan
- Status of local water management plan adoption
- Summary of monitoring data
- Permit and enforcement activity
- Status of wetland plans and banking

This report is organized by MWMO major program areas. Each program is described by goal and strategy from past work to future work. Due to its size, the Monitoring Report is a separate document. A short summary is found in this document.

The workplan description is delivered at a program level, rather than at an individual staff level. Individual workplans are adjusted quarterly to reflect and meet the ever-changing work environment of the MWMO, while program needs are driven by annual budget processes of the watershed and its members.

This reported may be updated periodically throughout the year. The most recent version will be available on the MWMO's website at www.mwmo.org.



1224 Marshall Street NE, Suite 201
Minneapolis, Minnesota 55413

(651) 287 0948
(651) 287 1308 fax

www.mwmo.org

Annual Report 2009 Final 20110101.docx

This Page Internationally Left Blank.

Table of Contents

Organizational Summary	1
Vision and Mission Statements	1
Formation and History	1
Board of Commissioners	4
Citizen Advisory Committee	6
Staff.....	7
Consultants.....	8
Request for Professional Services	8
Approved List of MWMO Providers for 2009.....	9
Achievements and Work Plan.....	11
Capital Improvements	11
Purpose:.....	11
Objectives:	11
Use of Funds	12
2009 Program Implementation:.....	12
2010 Workplan.....	13
Education and Outreach	14
Purpose:.....	14
Objectives:	14
2009 Program Implementation:.....	15
2010 Workplan.....	16
Emergency.....	17
Purpose.....	17
Objectives:	17
2009 Program Implementation:.....	17
2010 Workplan.....	17
Greening	18
Purpose:.....	18
Objectives:	18
2009 Program Implementation:.....	18

2010 Workplan.....	18
Land Acquisition	19
Purpose:.....	19
Objectives:	19
2009 Program Implementation:.....	19
2010 Workplan.....	19
Monitoring.....	20
Purpose:.....	20
Objectives:	20
2009 Program Implementation:.....	21
2010 Workplan.....	21
Planning	22
Purpose:.....	22
Objectives:	22
2009 Program Implementation:.....	23
2010 Workplan.....	23
Water Reuse and Conservation.....	24
Purpose:.....	24
Objectives:	24
2009 Program Implementation:.....	24
2010 Workplan.....	25
Watershed Assessment and Research	26
Purpose:.....	26
Objectives:	26
2009 Program Implementation:.....	26
2010 Workplan.....	27
Financial Information.....	28
Policy.....	28
Budget.....	28
Appendix A – The Drift.....	31

Organizational Summary

Vision and Mission Statements

Our Vision: To lead, to inspire, to act, to educate, and to create a shared vision for a river system with ecological integrity.

Our Mission Statement: To lead, and to foster stewardship of the watershed with actions that promote civic ownership and responsibility and through measures that achieve diverse and functional ecosystems.

Formation and History

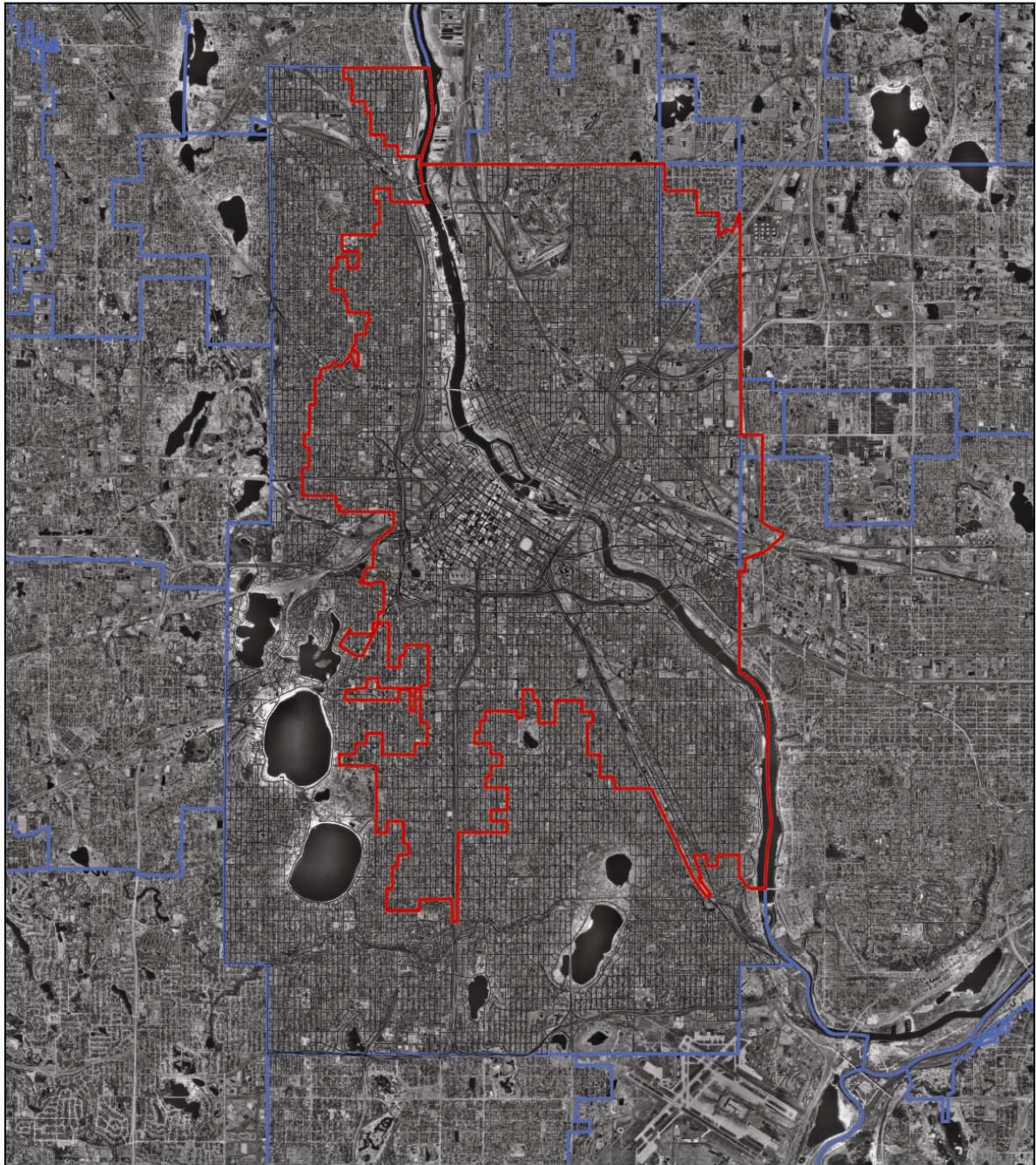
In January 1999, the cities of Minneapolis, St. Paul, Lauderdale, the City of Saint Anthony Village, and the Minneapolis Park and Recreation Board entered into a revised joint and cooperative agreement (JCA). These entities now form the MWMO. The MWMO encompasses 13, 602 acres (31.5 square miles) of fully-developed urban lands and waters within the core Minneapolis – Saint Paul metropolitan area.

Key events in the history of the organization:




- The first draft of MWMO Plan was published in December 1986. The 1986 Plan was prepared to meet the then-current Minnesota Chapter 509 requirements. The 1986 Plan addressed surface water quality and quantity, land use, and identified significant point and nonpoint source pollution in the MWMO. It also noted significant groundwater pollution problems from past industrial and commercial practices and storm sewer drainage, but was never approved by the BWSR or the MWMO Commission.
- The current Plan—approved in 2000, and amended in 2009—uses information and data from past studies and actions to address a variety of issues deemed significant by the MWMO Task Force, the MWMO Citizens Advisory Committee (CAC), the MWMO Technical Advisory Committee (TAC), and the Board of Commissioners.
- During second-generation planning (1997-2000), the MWMO acknowledged the limits of its member communities to incur additional financial expenses. Consequently, the MWMO developed strategies for new funding mechanisms. The MWMO sought inclusion on the list of Special Taxing Districts (MS 275.066) and, in 2001, MWMO became the first joint powers WMO to receive the ad valorem levy authority necessary to implement plan goals and objectives.
- In September of 2002, the MWMO hired two full-time staff to implement the plan.

The Mississippi River is the natural resource focus, nexus of the urban area we know as Twin Cities. The river itself provides important water-based ecosystem advantages and facilitates many other beneficial activities and services, including: hydroelectricity; barge access; habitat, wildlife corridors, and recreational water-related amenities; industrial, commercial, and residential land uses; public drinking water; and storm water and municipal wastewater discharge. Within the boundaries of the MWMO, surface water either flows directly overland or drains through pipes to the river. All groundwater generally flows toward the river as well.

The MWMO is one of several entities that have developed plans to address critical watershed issues within the MWMO. The MWMO believes coordination of these plans and the entities that drafted them are imperative to successful watershed management. The complex network of private and public (federal, state, regional, municipal, and local) agencies involved in water and natural resource management and land use planning and development must work together to achieve mutual goals. To put financial and human resources to best use, land use and environmental policies, projects, and programs stemming from the agencies must be implemented in a complementary, non-duplicative, rather than contrary manner.



Legend

-  MMWO_Boundary
-  mplsstreets
-  County_CTU_2000



Board of Commissioners

The governing body of the MWMO is its Commission, which consists of five (5) voting commissioners. All appointments to the Commission are made in accordance with Minnesota Statutes 103B.227 and Articles III and IV of the MWMO Joint and Cooperative Agreement (JCA). These statutes and articles together, lay out the appointment process and powers of the Board of Commissioners of the MMWO. A summary of key points follows.

Notices of all vacancies and appointments shall be published at least fifteen (15) days prior to filling a vacancy in a legal publication of the member's community seeking a commissioner. The council of each member shall appoint one (1) commissioner to represent the member to the commission. Each commissioner shall serve until his or her successor is appointed.

Member councils may select and appoint alternates to the commission in the same manner as commissioners. In the absence of a member's commissioner, the designated alternate may vote and act in the commissioner's place. The alternate shall serve a term concurrent with the member's commissioner. The council of each member shall determine the eligibility and qualifications of its commissioner and alternate.

Commissioners

Commissioner Jerry Faust, City of Saint Anthony Village, Chair

3301 Silver Lake Road
St. Anthony, MN 55418
612-782-3301

Commissioner Scott Vreeland, Minneapolis Park and Recreation Board, Vice-chair

1224 Marshall Street NE, Suite 201
Minneapolis, MN 55413-1036
612-465-8780 x 201

Commissioner Karen Gill-Gerbig, City of Lauderdale, Treasurer

1224 Marshall Street NE, Suite 201
Minneapolis, MN 55413-1036
612-465-8780 x 201

Commissioner Diane Hofstede, City of Minneapolis

350 South 5th Street, Room 307
Minneapolis, MN 55415
612-673-2203

Commissioner Matt Hass, City of Saint Paul

1224 Marshall Street, Suite 201
Minneapolis, MN 55413-1036
612-465-8780 x 201

Alternate Commissioners

Alternate Commissioner Randy Stille, City of Saint Anthony Village

3301 Silver Lake Road
Saint Anthony, MN 55418
612-782-3301

Alternate Commissioner Robert Fine, Minneapolis Park and Recreation Board

2117 West River Road
Minneapolis, MN 55411-2227
612-230-6400

Open

Alternate Commissioner Kevin Reich, City of Minneapolis

350 South 5th Street, Room 307
Minneapolis, MN 55415
612-673-2201

Karlynn Eckman, City of Saint Paul

1224 Marshall Street, Suite 201
Minneapolis, MN 55413-1036
612-465-8780 x 201

Citizen Advisory Committee

The MWMO Citizen Advisory Committee (CAC) meets at the request of the MWMO Board of Commissioners to assist in managing the water resources of the MWMO. The MWMO CAC reviews proposals for the Stewardship Fund Grant Program, the MWMO's annual capital budget, and the MWMO's Watershed Management Plan. They then make recommendations to the Board of Commissioners. When asked to do so, they also provide input on other topics.

Applications are accepted year-round, and open positions are filled throughout the year. Applications submitted to replace incumbents are due annually by December 1st. The CAC has staggered two-year terms, with up to four at-large appointments, if local representatives are not available. Annual recruiting for CAC positions begins in March.

All CAC members may be contacted through the MWMO office at:

1224 Marshall Street NE, Suite 201
Minneapolis, MN 55413-1036
612-465-8780 x 206

CAC Positions

Minneapolis Communities:

Longfellow: Craig Larson

University: Perry Dean
(University/Como)

Southwest: Alyssa Hawkins
(Southwest/Kingfield)

Camden: (Open)

Near North: (Open)

Central: (Open)

Phillips: (Open)

Northeast: Patrick Kvidera
(Mpls./Northeast)

Powderhorn: (Open)

St Anthony: John Madden (half of the year)

Lauderdale: (Open)

St Paul: (Open)

At Large: P. Victor Grambsch
(University / Nicollet
Island East Bank)

Lorin K. Hatch

Chev Kellogg

Staff

The MWMO Board of Commissioners first hired staff in September of 2002. Until that time, limited staffing had been provided by City of Minneapolis Environmental Services staff. The Board of Commissioners first established, and now maintains, personnel policies and structures to attract and retain qualified and competent personnel.

This is accomplished by encouraging continual performance improvement through a well-administered training, salary, and performance-review program, establishing and maintaining salary levels (which are comparable to salaries paid by similar employers with similar needs), providing equal pay for equal work, complying with all governmental requirements and regulations, and by providing flexibility to respond to economic and competition fluctuations while implementing goals of the watershed. In addition to the full-time employees above, the MWMO hires part-time regular and seasonal employees and interns as needed to complete its annual work plan.

2009 MWMO Staff

Executive Director

Douglas Snyder
dsnyder@mwmoo.org
651-287-0948, extension 205

Water Resource Manager

Kari Oquist
koquist@mwmoo.org
651-287-0948, extension 204

Program and Planning Manager

Dan Kalmon
dkalmon@mwmoo.org
651-287-0948, extension 203

Environmental Specialist

Brian Jastram
bjastram@mwmoo.org
651-287-0948, extension 207

Education and Outreach Manager

Jenny Winkelman
jwinkelman@mwmoo.org
651-287-0948, extension 202

Environmental Specialist

Rachel Olmanson
rolmanson@mwmoo.org
651-287-0948, extension 209

Education and Outreach Specialist

Erica Sniegowski
esniegowski@mwmoo.org
651-287-0948, extension 206

Office Administrator

Zhenya Stone
zstone@mwmoo.org
651-287-0948, extension 201

Grant Specialist

Nancy Dilts
ndilts@mwmoo.org
651-287-0948, extension 208

Consultants

In accordance with Minnesota Statutes, section 103B.227, subdivision 5, the MWMO sends out requests for proposals for legal, professional and technical (engineering), and consultant services at least once every two years (i.e. December of even numbered years). At its annual business meeting in January, the Board of Commissioners reviews a list of approved consultants and modifies it as necessary. The following is a copy of the request that was published in the Star Tribune:

Request for Professional Services

The Mississippi Watershed Management Organization (MWMO) uses outside consultants to provide professional services in a number of areas, including:

- Design and Engineering
- Legal
- Auditing and Financial Accounting
- IT/Network Administration

The MWMO Board, every two years, requests any firm interested in providing services to the MWMO submit a letter of interest, a list of related work/projects/clients, a list of key personal and their qualifications, and a current fee schedule. Information should be limited to four (4) pages total. Additional information regarding submittal requirements may be found at www.mwmo.org. Submittals must be received no later than 4:00 p.m., Thursday, December 28, 2009.

Submit to:
MWMO
1224 Marshall Street NE
Minneapolis, MN 55413
Attn: Douglas Snyder, Executive Director

Approved List of MWMO Providers for 2009

Accounting

HLB Tautges Redpath, Ltd.
651-426-7000
4810 White Bear Parkway
White Bear Lake, MN 55110

Houston Engineering, Inc.
763-493-4522
6901 East Fish Lake Road
Suite 140
Maple Grove, MN 55369-5400

Annual Fiscal Audit

HLB Tautges Redpath, Ltd.
651-426-7000
4810 White Bear Parkway
White Bear Lake, MN 55110

LHB
612-338-2029
250 Third Avenue North
Suite 450
Minneapolis, MN 55401

Engineering

Ayres Associates
651-484-5415
3550 Lexington Avenue North
Suite 210
Shoreview, MN 55126

Mead & Hunt
952-941-5619
7900 78th Street West
Suite 370
Minneapolis, MN 55439

Barr Engineering
952-832-2600
4700 West 77th Street
Minneapolis, MN 55435-4803

TKDA
444 Cedar Street, Suite 1500
Saint Paul, MN 55101

Bonestroo Rosene Anderlik & Associates
651-636-4600
2335 West Highway 36
St. Paul, MN 55113

URS
612-370-0700
600 Montgomery Street
26th Floor
San Francisco, CA 94111

Emmons & Olivier Resources
651-203-6001
651 Hale Avenue North
Oakdale, MN 55128

Wenck Engineering
763-479-4201
1800 Pioneer Creek Center
P.O. Box 249
Maple Plain, MN 55359

HDR
763-591-5400
701 Xenia Avenue South
Suite 600
Minneapolis, MN 55416

Westwood
952-906-7419
7599 Anagram Drive
Eden Prairie, MN 55344

WSB & Associates, Inc.
763-541-4800
701 Xenia Avenue South, Suite 300
Minneapolis, MN 55416

Financial

Northeast Bank
612-379-8811
77 Broadway Street NE
Minneapolis, MN 55413

Legal

Kennedy & Graven, Chartered
612-337-9215
470 Pillsbury Center, 200 S. 6th St.
Minneapolis, MN 55402

Other Service Providers

Barton & Associates
651-698-4312
2137 Juno Avenue
Saint Paul, MN 55116

Jim Roe Museum Planning
651-249-6126
865 Lenox Avenue
St. Paul, MN 55119

Eco Education
651-222-7691
1295 Bandana Blvd.
Saint Paul, MN 55108

Digital Motion, LLC
651-592-3129
PO Box 600336
Saint Paul, MN 55106

Ehlers and Associates
651-697-8553
3060 Centre Pointe Drive
Roseville, MN 55113-1105

Friends of the Mississippi River
651-222-2193
Suite 400
360 North Robert Street
Saint Paul, MN 55101

MMC Associates
651-647-6816
1312 Portland Avenue
Saint Paul, MN 55104

Fortin Consulting
763-478-3606
215 Hamel Road
Hamel, MN 55340

In addition to these service providers, the MWMO Board of Commissioners reserves the right to hire other qualified individuals and firms as necessary to implement its plan.

Achievements and Work Plan

Capital Improvements



Figure 2. Heritage Park

Photograph by J. Winkelman

Purpose:

The MWMO recognizes that not all water management problems can be resolved by preventative actions alone. Rather, they may require implementation of structural solutions to remedy water quality and quantity problems. The intent of the Capital Improvement Program (CIP) is to support the Mississippi Watershed Management Organization's (MWMO's) goals and policies through the implementation of structural solutions when feasible, economical, and necessary.

Objectives:

Projects meeting the following objectives may be selected for implementation (they are not listed in priority order). Although it is desirable to meet as many of these criteria as possible, projects do not have to meet all of them to make a positive contribution to the watershed. Project sites may occur in a wide variety of settings, such as: park land, institutional, residential, transportation, commercial, and industrial development:

- Improve the quality of water entering the Mississippi River by reducing pollutants and contaminants
- Protect, improve and restore the natural structure and functions of the water and ecological systems in the MWMO
- Reduce existing and potential flooding;
- Reduce the volume and slow the rate of water leaving the land
- Demonstrate new water management techniques and share the results
- Protect and improve the natural viewsheds to and from the Mississippi River corridor; enhance historical and cultural features related to water resources
- Participate in efforts to mitigate and remediate contaminated sites impacting water resources
- Collaborate with other watershed management organizations to prevent redundancy and solve trans-boundary water issues

- Involve the public in project decision-making and planning
- Support and integrate capital projects with other MWMO programs
- Create, maintain and update a prioritized list of current and possible projects
- Leverage funds from other sources to implement projects
- Effectively and efficiently solve water issues through capital project implementation

The Mississippi Watershed Management Organization's efforts will focus on preventative measures to improve water quality, but several projects have been identified that require structural solutions.

Use of Funds

The MWMO may fund all or a portion of project costs germane to water and water-related land resource improvements, including, but not limited to: engineering, legal, survey, investigative, study, design and development, other consultant costs, and permits.

The funds may not be used to pay the administrative and staff costs of other units of government. MWMO CIP funds cannot be used to fund administration, operation, and routine maintenance activities. The MWMO considers these in-kind contributions of project partners to our project funds. The funds may not be used to reimburse expenses incurred prior to MWMO Board of Commissioner's approval of a project and execution of an agreement between the MWMO and the other parties to the project.

Reimbursement for administrative and staff expenses of non-governmental agencies may be made using MWMO CIP funds, subject to the discretion of the Board of Commissioners of the MWMO.

2009 Program Implementation:

The MWMO entered into or continued grant agreements for seven (7) projects in 2009.

1. MWMO Building

Design development began for the site plan and building. Initial contact with Minneapolis site plan review was made regarding the plans. The design team is composed of Sterns and Associates - project manager; Sarah Nettleton and Associates and Michael Huber - architects; and Barr Engineering - site and stormwater design. The working schedule proposes to begin construction in spring of 2011.

2. Mississippi River Gorge Stabilization-- Ford Dam to Franklin Avenue; West Bank

The Minneapolis Park and Recreation Board has identified several areas of bank failure and erosion along the west bank of the Mississippi River, from the Ford Dam to 10th Street Bridge. MWMO staff and MPRB (who will lead the project) selected the highest priority projects to work on in 2009 and 2010 from a diagnostic study completed in 2007. Those improvements will be coordinated with street, parking and trail reconstruction.

3. Mississippi River Gorge Stabilization: Ford Dam to Franklin Avenue East Bank

Three sites on the east bank have been identified as needing capital improvements. A retaining wall and stormwater outlet near the Washington Avenue Bridge are failing. The University of Minnesota, MPRB and MWMO are jointly defining a project to solve all of its surrounding issues. The outlet at Bridal Veil Falls is failing, so it will be reconfigured to allow flows without scouring. The final project, which will be lead by MPRB, is to armor a failing slope in the gorge on the east bank.

4. B. F. Nelson - Phase I Development

The MWMO entered into an agreement with MPRB to grade, plant, and restore the river bank of this property (that was once an industrial site) on the Mississippi River. An irrigation system was installed to ensure vegetation will survive. Soil remediation and other environmental cleanup was also part of the project. MPRB lead the project, and the MWMO portion was completed in 2009. Additional work is needed to complete the park.

5. Minneapolis Emergency Management

The MWMO entered into an agreement with Minneapolis Emergency Management to improve a boat ramp in the gorge section of the river. The new ramp will allow access for larger boats and equipment to secure better monitoring, rescue and environmental cleanup than was previously available.

6. SEMI – Southeast Minneapolis Industrial Stormwater Treatment

Design work for stormwater improvement has begun in this area of the city. The project is scheduled for construction in 2010.

7. City of Saint Anthony Village Water Reuse

The MWMO, partnering with Rice Creek Watershed District, Hennepin County, and the City of Saint Anthony Village designed and constructed an innovative water reuse facility. The project captures wash water from the city’s water utility and from Silver Lake Road and then reuses the water for irrigation of Central Park and Saint Anthony Village City Hall. This unique project has received several local and state awards.

Implementation Table	2008	2009	2010
CIP Program Budget	\$2,350,000	\$2,777,000	\$500,000
Mississippi River Gorge Stabilization	\$500,000	\$650,000	
Saint Anthony Village Reuse	\$1,200,000		
Minneapolis Public Works Facility BMP	\$300,000		
MWMO Building	\$350,000	\$2,027,000	\$500,000
Minneapolis Emergency Management		\$100,000	

2010 Workplan

Hire a full-time staff person to coordinate the Greening, Land Acquisition, and CIP programs. This individual will partner with our members to identify projects and begin implementation in 2011. In addition, this person will help develop a five-year CIP for the Comprehensive Watershed Plan.

Work will continue forward with river bank stabilization on both the east and west banks; the MWMO building and site development will begin; SEMI will begin construction; and the B. F. Nelson - Phase I development will be completed. For detailed information regarding a specific project, please contact the MWMO.

Education and Outreach



Figure 3. The Mississippi River Green Team Sampling

Photograph by J. Winkelman

Purpose:

The Mississippi Watershed Management Organization strongly believes that both public participation and public education are keys to achieving enhanced water and land resource management in the watershed. The MWMO will organize and conduct educational campaigns and support the work of others to organize and conduct educational efforts to promote responsible stewardship of water and natural resources by the watershed community.

Objectives:

- Provide services and products to inform and educate the watershed community using tools such as trainings, presentations, events, website, press releases, newsletters and events
- Create and support opportunities for public participation and involvement (such as restoration, monitoring, river cleanups, reviewing plans, and participating in political processes)
- Work with staff from both the private and public sectors to prevent runoff and pollution at work sites and during routine maintenance activities (such as landscaping, snow/ice removal)
- Collaborate with other professionals and networks to leverage funding and increase the reach and effectiveness of watershed education (such as Watershed Partners, media campaigns, etc.)
- Inform and educate landuse decision makers about the relationship between land use and natural resource protection/conservation
- Integrate outreach and education into MWMO projects and programs to increase their effectiveness and to support the needs of staff, the board and committees
- Evaluate program effectiveness on an ongoing basis and modify strategies accordingly

2009 Program Implementation:

Program activities in 2009 included:

1. Initiating development of an education and interpretive plan for the MWMO building and site; convening an Education Technical Advisory Committee (ETAC) to coordinate programming with other existing facilities
2. Training for decision-makers; implementing “A View From the Big River: a Workshop About Water Quality and Land Use,” an educational event for local officials and community leaders
3. Implementing customized education and outreach efforts in a Southeast Asian community, based on the needs assessment and water education plan developed in 2008. Including participation in a Dragon Boat Festival, creation of the Nature of Water DVD in Hmong, Lao, Khmer, Viet, and English and assisting in grant writing; developing and training community leaders to present workshops on environmental topics for new immigrants, Hmong elders and families as part of a Community POWER grant and partnership with Association for the Advancement of Hmong Women, Volunteers of America: Hmong Elders Connection, Lao Advancement Organization of America, Lind-Bohanon Neighborhood Association, and the Minneapolis Park and Recreation Board
4. Training for professionals, conducting the Winter Maintenance of Parking Lots and Sidewalks Workshop as part of an EPA/PCA 319 grant; developing a training class and piloting a new workshop called, “ Summer Turfgrass Maintenance with Reduced Environmental Impacts,” that also results in certification by the PCA
5. Implementing the Mississippi River Green Team, A two-year, conservation-focused youth employment and development program for 14-17 year olds from North and Northeast Minneapolis; in 2009; program development and management was done in partnership with the National Park Service and the Community Design Center of Minnesota
6. Doing presentations and outreach at community events about nonpoint source pollution with residents and school groups.
7. Providing multimedia kiosks equipped with watershed education games in recreation and community centers, a city hall and a library in the MWMO

Implementation Table	2008	2009	2010
Education and Outreach Program Budget	\$225,000	\$250,000	\$250,000
Education and Interpretation for MWMO building	0	22,000	10,000
Mississippi River Green Team	45,000	30,000	20,000
Professional workshops and trainings	45,000	15,000	32,000
View From the Big River and NEMO	30,000	20,000	20,000
EcoEducation	20,000	20,000	20,000
Three Rivers Park District	0	6,000	6,000
Neighborhood and Community Outreach	3,000	6,000	2,000
Outreach to the Southeast Asian Community	10,000	3,000	10,000
Mississippi River Gorge Stewards	25,000	11,000	0

2010 Workplan

Most of the above educational activities and projects implemented in 2009 will continue into 2010. The multimedia kiosks will be placed in a semi-permanent home; as the technology and content is aging. Interpretive planning for the new MWMO building will be completed and begin the next steps of implementation. Developing a manual for the Turfgrass Maintenance Workshop and producing a training video about Winter Maintenance in Small Spaces will be added. For more information regarding these activities, contact the MWMO.

Emergency



Figure 4. The Collapsed 35W Bridge

Photograph by B. Jastram

Purpose

Provide a readily accessible source of funds for member organizations for the purpose of facilitating a response to immediate threats to water resources in the MWMO's watershed.

Objectives:

Provide financial assistance to member organizations for responding quickly to emergencies that impact water resources Promote the creation of emergency response and recovery plans by the member organizations to ensure eligibility for emergency response funds

2009 Program Implementation:

Discussions began in 2009 with the City of Minneapolis and the Coast Guard to develop better access points to the river in the gorge, between the falls and above the falls, to better respond to emergencies. The MWMO completed work with the City of Minneapolis in 2009 to install an improved landing and boat launch in the gorge. The project cost \$50,000.

Implementation Table	2008	2009	2010
Emergency Management Program Budget	\$00	\$100,000	\$00
Boat Launch in gorge reach of Mississippi River		\$50,000	

2010 Workplan

The MWMO is working with staff at Minneapolis Emergency Management to identify the next useful site for boat launch improvement or to cache supplies to respond to spills on the Mississippi River above Saint Anthony Falls or in the gorge.

Greening



Figure 5. Native vegetation planted along the Mississippi River

Photograph by B. Jastram

Purpose:

Use vegetation to reduce water volume, sediment and other pollutants of stormwater in the watershed, thereby protecting and improving surface and groundwater and natural resources.

Objectives:

- Reduce the volume, slow the rate and treat runoff leaving the land by using plants to:
 - Reduce the amount and continuity of impervious surfaces
 - Mitigate erosion
 - Conserve and reuse water
 - Increase capacity of the watershed to intercept precipitation and infiltrate and store water
 - Lower temperatures and reduce water loss and heat stress associated with drought
- Pilot innovative ideas and techniques for local conditions
 - Improve techniques, refine standards and identify limitations
 - Create highly visible demonstration sites to inform and educate the watershed community
 - Advance the development of water quality standards for landscape and building design
 - Learn from and work with other groups and efforts
 - Modify ordinances and variances
 - Identify research questions
- Restore and protect habitat, native plant and animal communities
 - Protect, enhance and restore natural areas by planting native species
 - Actively seek opportunities to vegetate urban landscape and link green spaces

2009 Program Implementation:

The MWMO is working to identify appropriate projects in the watershed to demonstrate greening principles as part of linear infrastructure projects the cities are proposing. To date, no project has qualified.

2010 Workplan

Hire a full-time staff person to coordinate the Greening, Land Acquisition, and CIP programs. This individual will partner with our members to identify projects and begin implementation in 2011.

Land Acquisition



Figure 6. Property on the Mississippi River
Photograph by D. Kalmon

Purpose:

Provide for the purchase of property that significantly impacts surface and groundwater, natural resources and other recreational, historical and cultural resources related to water.

Objectives:

- Purchase property in the watershed to:
 - preserve and improve historical and cultural resources related to water
 - create passive and active recreational opportunities related to water
 - protect, enhance and restore habitat, wetlands and sensitive areas (e.g., for groundwater recharge)
- Prioritize land acquisitions based on watershed planning goals, such as restoration opportunities, public access and protection of water and natural resources
- Leverage funding from other sources to purchase property that supports watershed planning goals
- Coordinate, assist, and partner with other watershed organizations, governmental units, non-profit and private entities to purchase property that supports watershed planning goals

2009 Program Implementation:

In 2009, the MWMO began looking for sites for a new office and education building. The organization purchased property to create a structure which will provide a demonstration for best management practices and education and learning opportunities for K-12, staff, member staff, and private contractors.

In addition, the MWMO helped fund land acquisition for the park land along the east bank of the Mississippi River.

2010 Workplan

Hire a full-time staff person to coordinate the Greening, Land Acquisition, and CIP programs. This individual will partner with our members to identify projects and begin implementation in 2011.

Monitoring



Figure 7. Rachel O., MWMO Environmental Specialist, Installs a Monitoring Gauge

Photograph by B. Jastram

Purpose:

Monitoring provides a scientific basis for identifying and evaluating water quality issues and implementing solutions to improve water quality in the watershed. Water quality monitoring provides scientific data to ascertain where and how best management practices (BMPs) can be implemented to effectively achieve water quality goals.

The MWMO is charged with protecting water quality within the watershed, pursuant to Minnesota Statutes Chapter 103B.201 and Minnesota Rules Chapter 8410.003, which established a Joint and Cooperative Agreement among the MWMO's member organizations. Minnesota Rules Chapter 7050 requires that all water bodies comply with water quality standards. Furthermore, section 303D of the Federal Water Pollution Control Act (commonly known as the Clean Water Act) requires states to develop total maximum daily loads (TMDLs) for waters with impaired uses.

Objectives:

- Monitor biological, chemical, and physical parameters of water resources in the watershed
- Monitor water quality within the watershed
 - Develop a record of baseline data to characterize water quality and identify pollutants that exceed water quality standards
 - Assess pollutants listed on the Minnesota "Polluted Waters" list for the TMDL process
- Assess the volume and rate of water movement in the watershed
- Develop and agree upon a standardized set of parameters and sample collection, data analysis, and reporting standards with organizations in the watershed
- Develop partnerships and collaborate with other organizations and/or agencies both inside and outside the watershed boundaries to improve water quality in the Mississippi River
- Assess land use impacts on water quality

2009 Program Implementation:

The MWMO collected data at six sites on the Mississippi River and at Loring Pond on a weekly basis, April through October. Data were also collected from five stormwater outfalls to the Mississippi River, year-round, during base flow, storm event and snowmelt flow periods. MWMO staff also collected data in a stormwater pipe at the boundary of St. Anthony and Minneapolis to monitor St. Anthony stormwater quality. The MWMO also monitored water quality in the Kasota Ponds wetlands that are located in St. Paul.

In 2009, in coordination with staff at the University of Minnesota, Saint Anthony Falls Laboratory, the MWMO completed development and installation of a real-time, automated monitoring network at its stormwater monitoring sites. The MWMO also contracted Bonestroo to set and survey benchmarks at the river monitoring sites to tie MWMO water level readings into other local, state and federal data records.

The MWMO creates an extensive Annual Monitoring Report which is available on our website at www.mwmo.org. For detailed information on this program, please contact the MWMO.

Implementation Table	2008	2009	2010
Monitoring Program Budget	\$225,000	\$250,000	\$250,000
Real-time Monitoring	\$63,000		
Benchmark Survey	\$2,000	\$5,000	
Minneapolis Illicit Discharge Monitoring	\$57,000	\$5,000	\$7,000
Laboratory Analysis	\$31,000	\$48,000	\$58,000
Equipment		\$22,000	\$19,000
Real-time Data Management Agreement with SAFL			\$10,000

2010 Workplan

The existing monitoring stations will be continued, and through coordination with members and state agencies, additional sites and parameters that need to be to meet will be identified to meet the requirements of NPDES permits, TMDLs and other programmatic needs and regulations. A river monitoring site will be added between Upper and Lower Saint Anthony Falls to assist the MPCA with data collection for the Upper Mississippi River Bacteria TMDL Project. The MWMO will continue sharing collected data through the Annual Monitoring Report and the MPCA storage and retrieval (STORET) database. MWMO will also contract with SAFL to assist with maintenance of and database management for the real-time monitoring system.

Planning



Figure 8. Dan Kalmon, Planning Manager, Karen Gill-Gerbig, MWMO Board, and Karlyn Eckman, MWMO Board.

Photograph by B. Jastram

Purpose:

Planning provides direction for the MWMO's activities and clarifies and integrates goals into future courses of action. Planning provides the MWMO with a deeper understanding of its organization and its processes, and planning identifies a path for achieving desired goals.

Planning carried out by the MWMO transforms the planning requirements of Minnesota Statutes Chapter 103B from referenced laws into goals, a mission, and a vision that are collectively understood and implemented by the MWMO and its member organizations. Planning activities are open to individuals, MWMO Commissioners and staff, and all other organizations and groups interested in working with the MWMO.

Objectives:

- Keep the MWMO's Watershed Management Plan (WMP) current to address new circumstances and changing priorities
- Develop plans for new watershed initiatives
- Review and respond to planning related activities and project proposals within the watershed to assure they are in concert with the MWMO's water management plan
- Review and approve local management plans and amendments that impact water and natural resources
- Provide access to information about MWMO goals, priorities, projects and programs
- Encourage public participation in MWMO planning activities
- Bring together information (i.e. watershed assessments and data, public comment, staff and board reviews) to identify MWMO planning priorities
- Integrate MWMO priorities into programs and projects
- Develop consensus among stakeholders for managing resources in the watershed

2009 Program Implementation:

The MWMO began the Third Generation plan process in 2008. This ongoing rewrite will be completed late in 2009 or early 2010 for submittal to BWSR to begin the formal review process. The plan is scheduled for approval by the MWMO board in late 2010.

Implementation Table	2008	2009	2010
Planning Program Budget	\$65,000	\$50,000	\$50,000
Third Generation Plan (Develop MWMO Standards)	\$36,633		
Jurisdictional Authorities and Responsibilities			\$29,845

2010 Workplan

In addition to completing our Comprehensive Watershed Management Plan in 2010, the MWMO will review and comment on significant planning initiatives within the watershed – including, but not limited to, the Minneapolis NPDES permit, DNR Critical Area rulemaking, and member local landuse plans, rules and ordinances.

Water Reuse and Conservation



Figure 9. City of Saint Anthony Village Water Reuse Facility
Photograph courtesy of the City of Saint Anthony

Purpose:

Reduce impacts and demands on our water resources through a combination of water conservation (using less water) and reuse (using water more than once before discharge).

Objectives:

- Reduce the volume and slow the rate of water leaving the land
- Reduce the concentration of pollutants in stormwater
- Encourage water conservation and reuse whenever opportunities arise
- Provide technical and funding assistance for projects in the watershed
- Provide leadership in the area of stormwater conservation and reuse practices
- Pilot innovative and visible demonstrations to showcase practical applications and techniques
- Advance the development of water conservation and reuse practices for landscape and building design
 - Learn from and work with other groups and efforts
 - Modify ordinances and variances
 - Identify research questions
 - Promote integration of building and landscape design
- Assist member organizations in eliminating remaining combined sewer overflows

2009 Program Implementation:

The MWMO entered into an agreement with the City of Saint Anthony Village to construct a water reuse project that will allow the city to recapture and use back-flush water (from its water supply facility) and rainwater to water its central park. The project will be completed in 2009.

Implementation Table	2008	2009	2010
Water Reuse and Conservation Program Budget	\$50,000	\$50,000	\$150,000

2010 Workplan

Identify additional projects to demonstrate the value and efficiency of viewing stormwater as a resource. This will be coordinated with the CIP development.

Watershed Assessment and Research



Figure 10. Monitoring Equipment Cabinet at a Mississippi River Stormwater Outfall

Photograph by B. Jastram

Purpose:

Develop a scientific base of knowledge that characterizes physical, chemical, cultural, historic, biological, social, economic, organizational, and political resources of the MWMO to guide planning and management decisions in the watershed.

Objectives:

- Provide information needed to set performance standards for the watershed
- Conduct basic research to acquire further knowledge on general water resource issues within and beyond the watershed's boundaries
- Conduct assessments within the watershed to define the ecological, physical, biological, cultural, social, economic, organizational, and political characteristics that comprise the MWMO
- Conduct project-based diagnostic and feasibility studies
- Provide information to support other MWMO projects and programs
- Provide information to inform the prioritization and use of the MWMO's natural, financial and human resources
- Provide watershed information to organizations both inside and outside the MWMO's boundaries

2009 Program Implementation:

Several assessments were started and will be completed as part of Third Generation Watershed Management Plan development, including an historical review of pre-settlement soil and water resources features, historic and current vegetation, and a comprehensive wetland assessment. Additional studies will be also be completed.

Implementation Table	2008	2009	2010
Watershed Assessment and Research Program Budget	\$575,000	\$300,000	\$200,000
Joint Watershed Research Program		\$100,000	\$100,000
Mississippi River Bank Restoration Guide (Field Services)	\$9,970		
Mississippi River Bank Restoration Guide (Software)	\$19,500		
Historic Waters (Writing & Research)	\$17,459		
Functional Assessment of Wetlands		\$26,981	\$33,375
Hawthorne EcoVillage Diagnostic Feasibility Study			

2010 Workplan

Coordination of assessments and research projects and planning will be needed to augment the Third Generation Watershed Management Plan and the standards therein. The MWMO will work with members' staffs to identify knowledge gaps and design assessments to inform the plan. In addition, MWMO and Minnehaha Creek Watershed District will hold another round of the Joint Research Grant Program in 2010. Up to \$400,000 (\$200,000 from each watershed organization) will be made available to researchers to conduct longer term projects that will inform watershed management in the seven-county metropolitan area.

Financial Information

Policy

During plan development (1997-2000), the MWMO acknowledged the limits of its member communities to incur additional financial expenses and therefore developed strategies for new funding mechanisms. The MWMO sought inclusion on the list of Special Taxing Districts (MS Chapter 275.066), and, in 2001, MWMO became the first joint powers WMO to receive levy authority, which is necessary to implement plan goals and objectives. Taxes are levied in accordance with procedures specified in the Joint and Cooperative Agreement (JCA) and Minnesota Statutes 103B. 201 – 103B.255 and the Metropolitan Surface Water Management Act (Act), and are subject to limitations set forth in Minnesota Tax Statutes, the Act, the JCA, and the Watershed Management Plan. It is the Board of Commissioners' policy to use funds it raises in the most effective and efficient manner possible.

Budget

In general, the MWMO follows the following process to set its annual budget and select capital projects to which grant funding is allocated:

- Seek project proposals from members from January through June
- Submit a draft budget and proposed projects at the July board meeting
- Select proposed projects by the September board meeting
- Submit a preliminary budget to counties
- Make final project selection and approve final budget at the November board meeting
- Submit final documents to Hennepin and Ramsey Counties

This process is changing as part of the development of the Comprehensive Watershed Management Plan. A new process will be defined during plan development. Anyone interested in details of the budget process should contact the MWMO.

The MWMO seeks to coordinate its CIP with that of its members. Projects will be required to have feasibility studies completed that describe estimated water quality and quantity benefits and habitat or resource protection and improvement prior to being placed on the MWMO's CIP. This means anyone wishing to partner with the MWMO will need to invite the watershed to the table early in project design and assessment. The MWMO believes this will improve the project selection process and allow better budgeting.

Table 1. Levy and Budget 2009

Levy Limit set at September 2008 MWMO Board Meeting

Final Budget set at the November 2008 MWMO Board Meeting

Approval of the budget does not constitute approval of individual projects. Funds will be encumbered to a project only after a completed legal agreement between the MWMO and a lead agency define a specific scope of work..

Summary

Projects	\$2,777,000
Programs	\$1,000,000
Administration	\$800,000
	Subtotal Budget
	\$4,577,000
Contingency 3% (Uncollected Levy)	\$140,000
Total Budget	\$4,717,000

Projects

Minneapolis Emergency Management	\$100,000
MWMO Building	\$2,027,000
MPRB	\$650,000

Programs

Water Conservation	\$50,000
Education/Information Nonpoint Source Pollution Program	\$250,000
Stewardship Grant Fund	\$-
Planning	\$50,000
Watershed Assessments (Research, Hydrologic and Hydraulic Studies)	\$300,000
Monitoring	\$250,000
Greening	\$-
Land Acquisition	\$-
Program Support / Consultants	\$100,000

Administration

Staff Salary and Benefits	\$630,000
Commissioner Expenses	\$15,000

Table 2. Estimation of Apportioned Levies Payable 2009

DISTRICT 072 - Middle Mississippi River Watershed Management Organization				
ESTIMATION OF APPORTIONED LEVIES PAYABLE 2009				
(1) Payable 2009 Property Tax Levy:				\$ 4,717,000
County	(2) Payable 2008 Taxable Net Tax Capacity	(3) Net Tax Capacity Percent Distribution		(4) Apportioned Payable 2009 Levy (1) x (3)
HENNEPIN	175,000,000	99.60	%	4,698,132
RAMSEY	695,000	0.40	%	18,868
Total	175,695,000	100.0000	%	4,717,000

Appendix A – The Drift