

# Watershed Management Plan Kick-off Meeting

September 11, 2007

Watershed Management Plan

**MWMO**  
Metropolitan Watershed Management Organization



## Presentation Outline

1. Welcome and Introductions
2. Review Planning Process and Timeline
3. Public Involvement
4. Role of MWMO Board & MWMO Staff
5. Introduction of SAG, IAG, & CAC members
6. Questions

Watershed Management Plan

**MWMO**  
Metropolitan Watershed Management Organization



# Welcome and Introductions

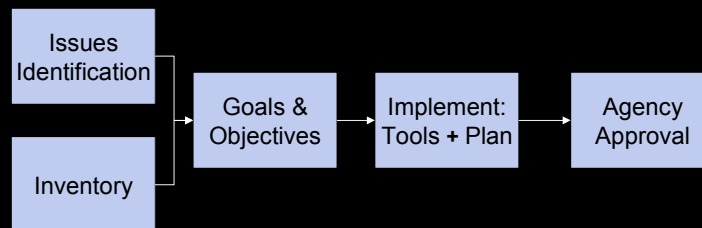
- Emmons & Olivier Resources, Inc.
  - Brett Emmons, Senior Advisor
  - Camilla Correll, Project Manager
  - Kristen Larson, Project Coordinator
- Hoisington Koegler Group, Inc.
  - Mark Koegler, Public Involvement

**MWMO**  
Metropolitan Watershed Management Organization

Watershed Management Plan

# Review Planning Process and Timeline

- Plan Components:



- Organized by Subwatershed

**MWMO**  
Metropolitan Watershed Management Organization

Watershed Management Plan

## Review Planning Process and Timeline (cont.)

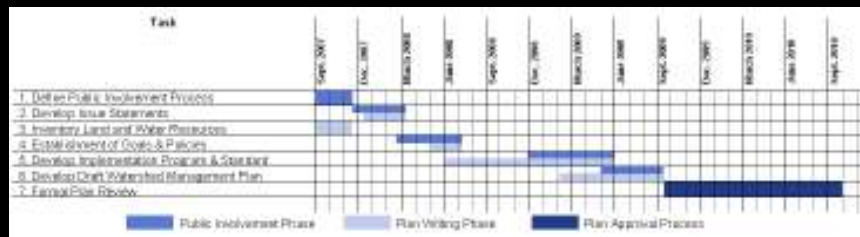
- Unique Features of Plan:
  - Local and Regional Priorities and Planning Efforts
  - Resource-Based Performance Standards
  - Future Trends
  - Implementation Coordinated with Local Organizations
  - Plan Amendment Process
  - Stakeholder Involvement

**MWMO**  
Metropolitan Watershed Management Organization

Watershed Management Plan

## Review Planning Process and Timeline (cont.)

- Planning Process (2 years) + Formal Approval (1 year)



**MWMO**  
Metropolitan Watershed Management Organization

Watershed Management Plan

## Public Involvement

- Importance of Public Involvement
  - Involve a broad spectrum of stakeholder interests - everyone from “backyard hydrologists” to those with highly technical backgrounds
  - Build ownership in the plan
  - Enhance general public knowledge of watershed interests and issues
  - Raise the profile of the MWMO

**MWMO**  
Metropolitan Watershed Management Organization

Watershed Management Plan

## Public Involvement

- Unique Components of this Public Involvement Process
  - Large-scale initial outreach
  - Reach out to the non-English speaking constituency
  - Breaking the plan components into smaller, absorbable pieces

**MWMO**  
Metropolitan Watershed Management Organization

Watershed Management Plan

# Public Involvement

- 4 Committees that will Involve Stakeholders and Local Agencies

## General:

-Stakeholder Advisory Committee (SAC)

-Citizen Advisory Committee (CAC)

## Science:

-Science Advisory Group (SAG)

## Local Gov't:

-Implementation Advisory Group (IAG)

**MWMO**  
Metropolitan Watershed Management Organization

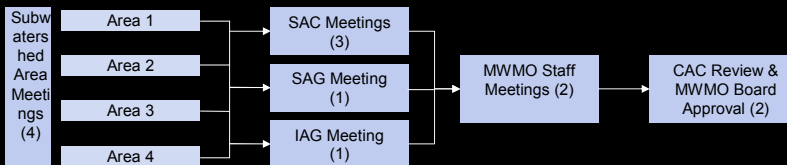
# Public Involvement Process

## Plan Kick-off Phase

**Kick-off Meeting (1)**  
with MWMO Board,  
MWMO Staff, CAC,  
SAG/IAG

**Watershed-wide Promotions and Recruitment Effort**

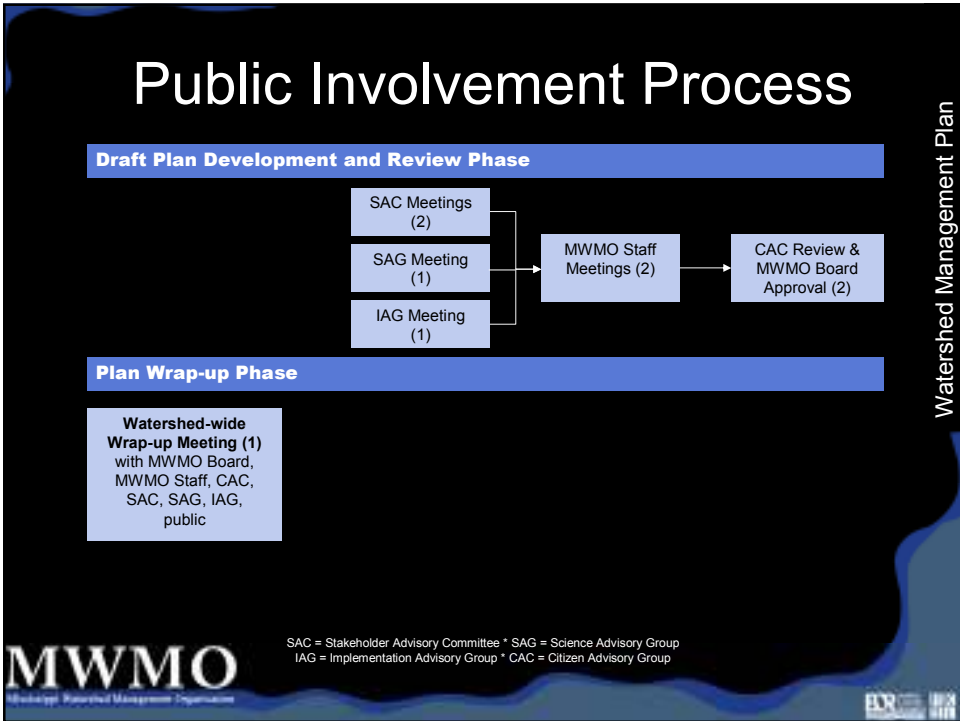
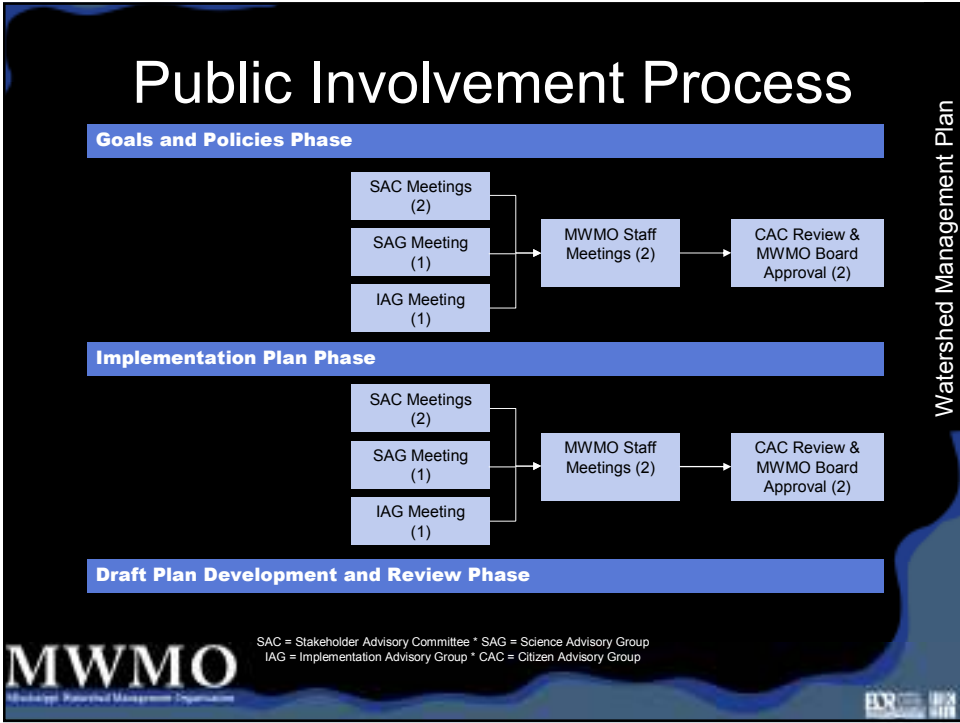
## Issue Identification Phase



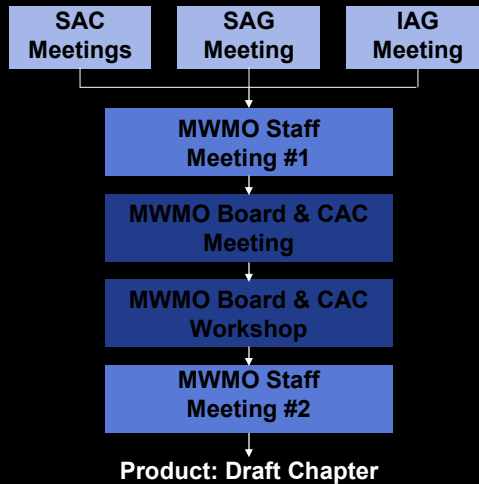
## Goals and Policies Phase

**MWMO**  
Metropolitan Watershed Management Organization

SAC = Stakeholder Advisory Committee \* SAG = Science Advisory Group  
IAG = Implementation Advisory Group \* CAC = Citizen Advisory Group



# Process/Flow of Information



SAC = Stakeholder Advisory Committee \* SAG = Science Advisory Group  
IAG = Implementation Advisory Group \* CAC = Citizen Advisory Group

**MWMO**  
Metropolitan Watershed Management Organization

Watershed Management Plan

# Role of MWMO Board

- Review Public Involvement Input
- Identify Additional Input/Issues from the Board's Perspective
- Review Draft Chapters of Plan as they are Written
- Provide Staff with Policy Direction

**MWMO**  
Metropolitan Watershed Management Organization

Watershed Management Plan

## Role of MWMO Staff

- Review Public Involvement Input
- Identify Additional Input/Issues from the Staff Perspective
- Review Draft Chapters of Plan as they are Written

Watershed Management Plan

**MWMO**  
Metropolitan Watershed Management Organization



## Role of SAG

- Help Create a Technically Sound Plan
- Review of Plan-related Background Materials
- Review Draft Chapters of Plan as they are Written

Watershed Management Plan

**MWMO**  
Metropolitan Watershed Management Organization



## Role of IAG

- Help Create a Plan that Facilitates Local Implementation
- Review of Science Input & Implementation Obstacles
- Review Draft Chapters of Plan as they are Written

**MWMO**  
Mississippi Watershed Management Organization

Watershed Management Plan

## Role of CAC

- Help Incorporate Local Knowledge of Issues Into Plan
- Review Draft Chapters of Plan as they are Written
- Provide Input at Board Meetings & Workshops

**MWMO**  
Mississippi Watershed Management Organization

Watershed Management Plan

**SAG, IAG, CAC  
Committee Introductions**

MWMO  
Metropolitan Waterworks  
Authority

Watershed Management Plan

ERR  
2018

This slide is a cover for a presentation. It features a black background with a blue wavy border at the top. The title 'SAG, IAG, CAC Committee Introductions' is centered in white, bold, sans-serif font. The MWMO logo is in the top left, and the 'Watershed Management Plan' text is in the top right. The 'ERR 2018' logo is in the bottom right corner.

**Questions?**

MWMO  
Metropolitan Waterworks  
Authority

Watershed Management Plan

ERR  
2018

This slide is a cover for a presentation. It features a black background with a blue wavy border at the top. The title 'Questions?' is centered in white, bold, sans-serif font. The MWMO logo is in the top left, and the 'Watershed Management Plan' text is in the top right. The 'ERR 2018' logo is in the bottom right corner.